

YOUR RAIL SOLUTIONS **PARTNER**



 **HRSA**

Holland Rail Services Australia

OUR CORE VALUES OF FAMILY, RESPECT, PARTNERSHIP, INTEGRITY AND IMPROVEMENT PROVIDE THE FOUNDATION TO EVERYTHING WE DO.

For our partners, this means we deliver our commitments to **safety**: striving towards zero injuries and accidents; **quality**: providing quality products and services and continually looking for ways to improve; and **leadership**: developing industry leading technology and employees

The combination of our **Core Values** and our commitments to **Safety, Quality and Leadership** help us build a true **Solutions Partnership Unlike Any Other**

#1

NORTH AMERICAN RAIL WELDING INDUSTRY LEADER

Industry leader in the field of flash-butt welding, not only in terms of available resources, but also in experience and dedication to continual development of new technology that enables us to adapt to the evolving requirements of the railroad community.

93% & 85%

DEDICATED AND TRAINED WORKFORCE

Overwhelming majority of Holland employees received work and/or safety related training in the last 18 months (~93%). Low loss of talent and organizational knowledge because of high retention rate (~85% in welding division).

~250,000

WELDS PRODUCED ANNUALLY

Welding program produces largest amount of welds in North America with focus on Equipment Uptime (>99%) & Weld Quality



200+ MOBILEWELDERS

1200+ EMPLOYEES

36 COUNTRIES

FOUNDED IN 1935, HOLLAND HAS BEEN A LEADER IN PROGRESSIVE AND COMPREHENSIVE SOLUTIONS SPANNING THE RAIL INDUSTRY FOR 85 YEARS.

It's not one product, service or solution that does it all but a continuing dedication to client service and building lasting relationships that address real-world problems with unique solutions. We employ a diverse, talented and innovative workforce of nearly 1200 employees committed to providing the best solutions and service. With multiple facilities and job sites across North America and welding equipment in over 36 countries, we are strategically located to provide our customers with the best products and services as quickly as possible.

Holland is the industry leader in the field of flash-butt welding, not only in terms of available resources, but also in experience and dedication to continual development of new technology that enables us to adapt to the evolving requirements of the global railroad community. Our full portfolio of innovative Maintenance of Way services keeps Freight and Transit rail systems across the world running safely and efficiently with maximum uptime.



FLASH-BUTT WELDING

In-Track Maintenance Welding

Flash-butt welds made by a Holland MobileWelder® at affected locations during defect removal are quick, effective, and frequently eliminate the need for installation of additional rail. Our proven low consumption welding technology in conjunction with our Puller-Lite eliminates the defects in the rail and joints, while increasing productivity and reducing labor. This established welding process ensures a high-quality, lasting repair.

In-Track New Construction

With the largest mobile flash-butt rail welding fleet in the world, we pride ourselves as pioneers in developing high-quality and cost-effective flash-butt welding technology solutions. Our Intelliweld® Control System provides an unmatched degree of accuracy and quality in the production of rail welds.

Portable Production Line Welding

Conversion of stick rail into Continuous Welded Rail (CWR) on-site with a Holland MobileWelder® is an efficient and cost-effective way of providing rail strings without the necessity and expense of having CWR delivered. The flexibility of setup and the portability of the equipment allows for intra-site work locations. The easily controlled fabrication of specific lengths required for the job make roller line welding a first option for rail fabrication for many projects.

In-Track Destressing

Utilizing a Holland MobileWelder® and 160-ton rail puller, we tension the rail - compressive forces are minimized by cutting the rail section and then stretching the rail section to neutral forces. A Holland flash-butt weld is then made; once cooling of the weld occurs, rail pulling ceases and the rail is re-anchored.

Holland Automated Manganese Refurbishment™

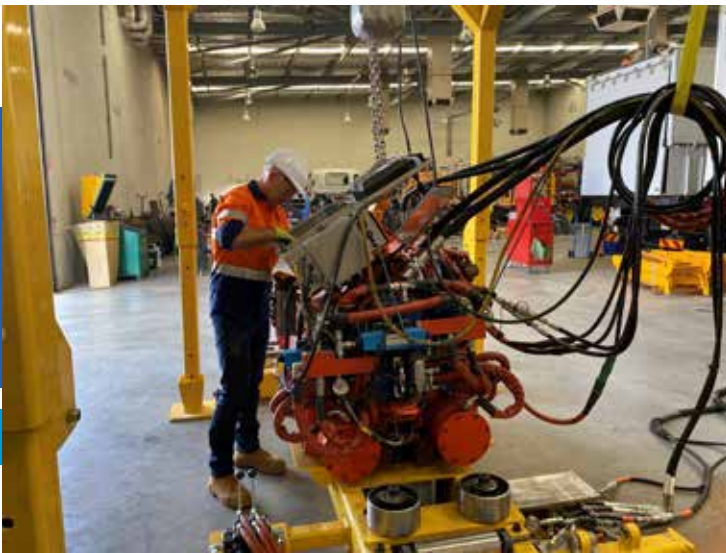
HAMR™ uses robotically controlled hot wire cladding (welding) to build back the damaged area on rail frogs. This process provides improved welding through lower heat input on parent material. The resulting repair is higher quality, longer lasting and can be completed two to three times faster than a traditional repair weld.



HOLLAND IS COMMITTED TO INNOVATION AND CAPITALIZES ON OUR EXPERTISE IN R & D, ENGINEERING AND MANUFACTURING.

Holland's Global Headquarters is located just outside of Chicago features an ISO-9001, 185,000 sq. ft. Lean manufacturing facility and houses a highly skilled team of engineers and machinists who are responsible for the design, development, manufacturing and refurbishment of rail welding equipment. Our equipment is designed by people who weld rail for people who weld rail.

Our Australian HQ is located in Perth, WA, where Holland welding equipment is purpose-built and assembled specifically for the Australian market. Perth is also the home base of our Australian support team including a warehouse with replacement parts onshore. The full range of Holland's capabilities and support are available all the time.



Holland is the leader in rail FBW because our commitments to innovation and improvement are more than just buzzwords. Our North American HQ is home to a one-of-a-kind weld quality lab that's dedicated to improving "the weld" at the core of what we do. Here we can perform weld evaluations and qualifications per AREMA and other customer specific specifications, assess weld quality issues from the field and create a true root cause linkage to weld and process improvement outputs and create weld programs for various rail size, grade, chemistry and requirements.

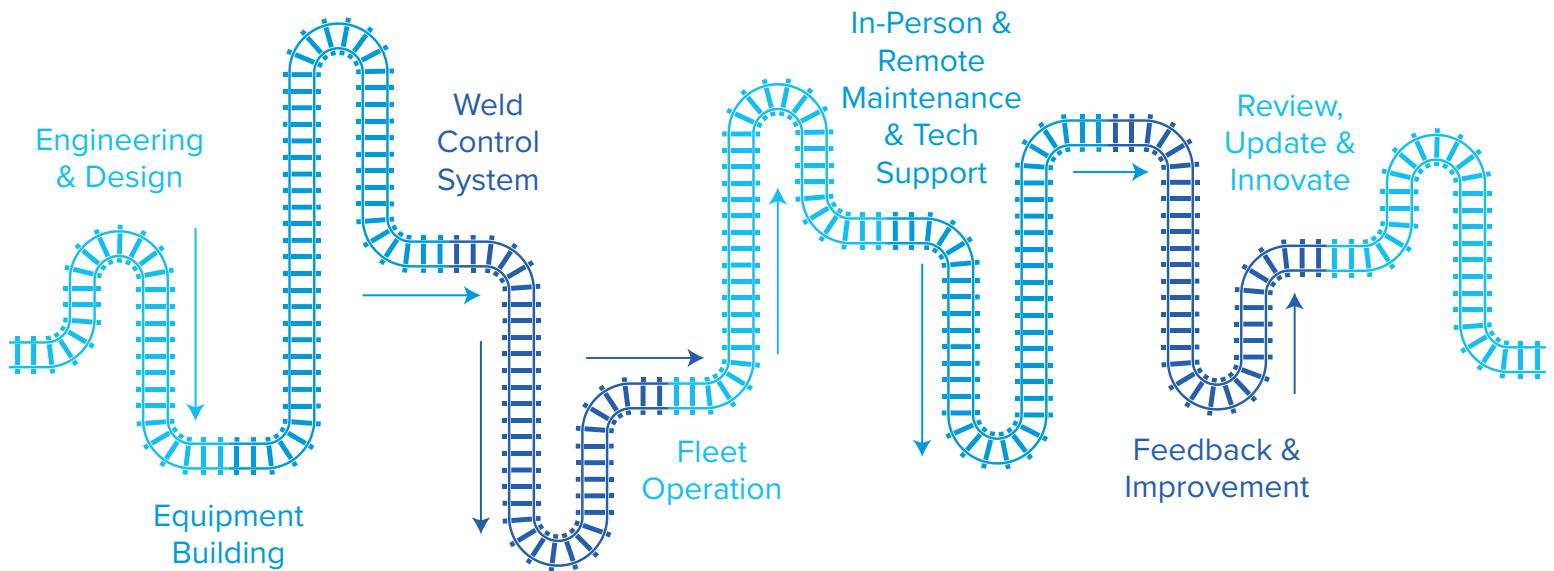
WELD QUALITY LAB



QUALITY

TRAINING

PRODUCTIVITY



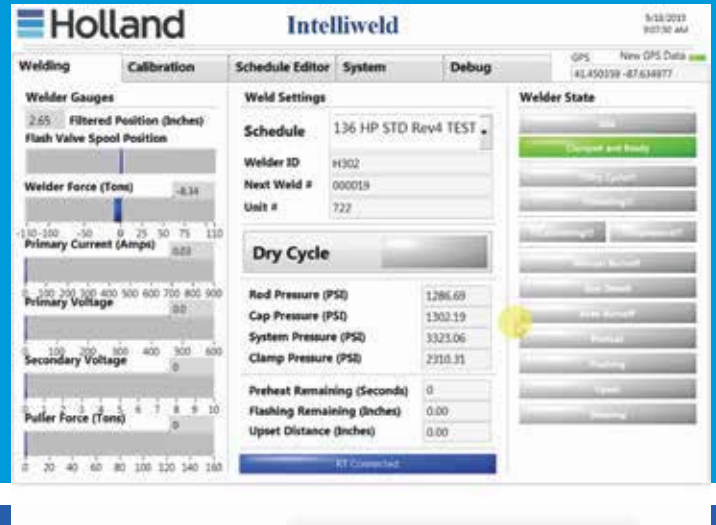
HOLLAND HAS PARTNERED WITH ARIES RAIL TO BRING THE WORLD'S BEST FLASH-BUTT RAIL WELDING TECHNOLOGY AND SERVICE TO AUSTRALIA

- Specialised FBW teams operating Holland engineered, built and supported equipment
- Australian workforce fully trained in FBW operations by Holland FBW experts
- Holland best-in-class FBW training, research and testing in support of operations
- Mobile, portable and semi-fixed environments
- H650 Welderhead with standalone Rail Puller for maximum FBW application capability and flexibility

Holland

INTELLIWELD® CONTROL SYSTEM

- Low consumption weld capability
- Real-time weld monitoring, control and diagnostics
- Real-time automated data collection, weld parameter certification, charting and archiving
- Real-time automated full fleet operational dashboard



The Intelliweld® control system provides unparalleled control over the flashing process & rail consumption (low consumption welding). Simple program adjustments allow us to tailor rail consumption to your requirements for localized track structures & target rail neutral temperature. Lower rail consumption reduces the amount of de-clipping and clipping required, improving productivity and reducing labor costs.

TOP TEN FEATURES

1. Single system control
2. Hardened electronic equipment
3. Remote welder interface for software updates and troubleshooting
4. Certified weld schedule lock
5. Sub millisecond weld process control
6. Flashing interrupt monitoring
7. In process automated weld parameter adjustment
8. Automated calibration routine
9. Valve null readings determined during calibration
10. Automated weld quality checks



**>250K WELDS
PER YEAR**

>98% UPTIME

**>99% WELD QUALITY
CONFORMANCE**

www.hollandco.com/au

+61 438 300 096

≡ HRSA

Holland Rail Services Australia Pty Ltd

2207/11 Barrack Square
Perth, WA 6000