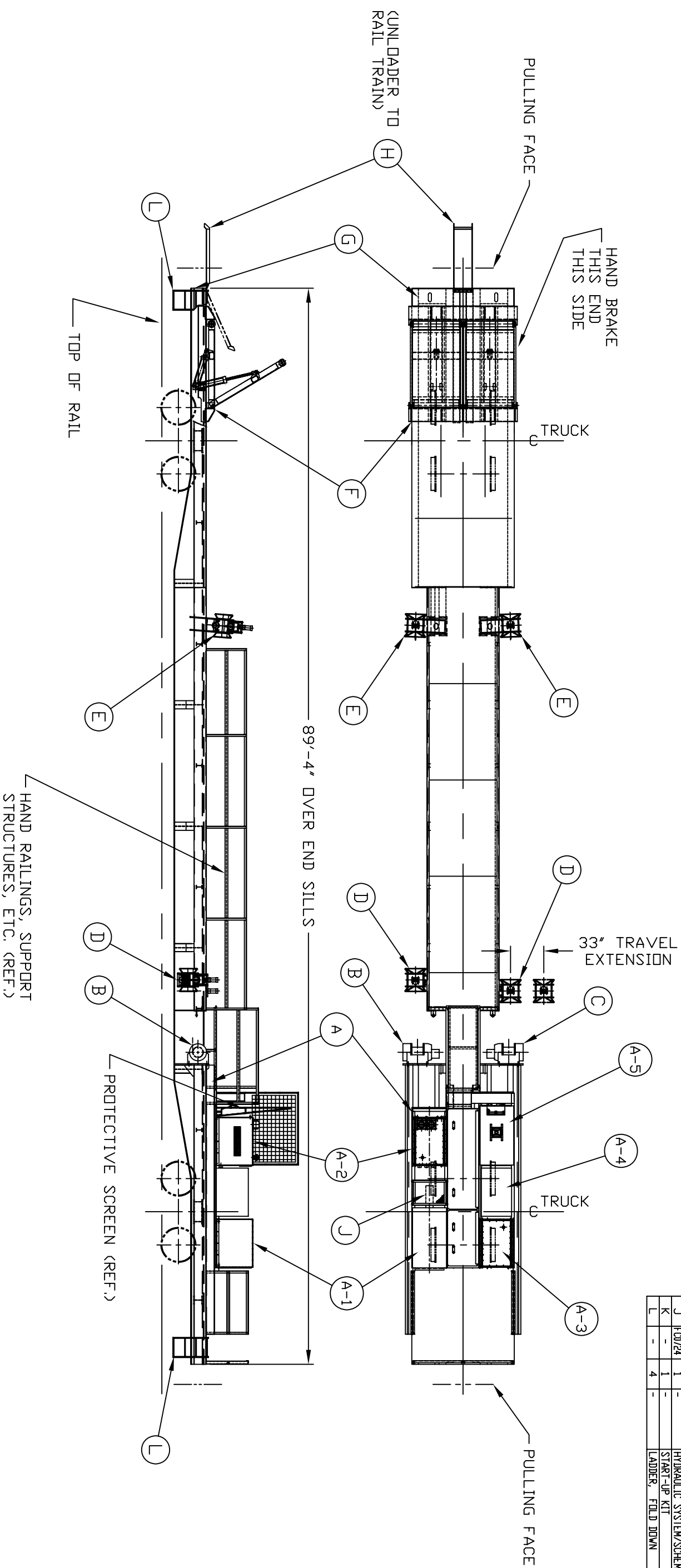


HOLLAND BILL OF MATERIAL					
MARK	P/N	QTY	MATL	NAME DESCRIPTION	WGT
A	-	1	-	POWER SKID ASSEMBLY	-
'A-1'	-	-	-	DIESEL ENGINE	-
'A-1'	-	-	-	HYDRAULIC PUMP	-
'A-2'	FC0045	-	-	FUEL TANK (200 GAL. CAPY)	-
'A-3'	FC0044	-	-	FUEL TANK (200 GAL. CAPY)	-
'A-4'	FC0315	-	-	STORAGE BOX (LOCKABLE)	-
'A-5'	-----	-	-	OPERATORS CONTROL STATION (ENCLOSED)	-
B	FC0098	1	-	VINCH ASSEMBLY-CLOCKWISE ROTATION	-
C	FC0097	1	-	VINCH ASSEMBLY-COUNTER CLOCKWISE ROTATION	-
D	-	2	-	TELESCOPING THREADER BOX ASSEMBLIES W/TILT	-
E	-	2	-	INTERMEDIATE THREADER BOX ASSEMBLIES W/ADJ.	-
F	-	1	-	ELEVATING END ROLLER ASSEMBLY	-
G	-	1	-	RAIL CAR MODIFICATION	-
H	-	1	-	FOLDING CROSSOVER WALKWAY	-
J	FC0724	1	-	HYDRAULIC SYSTEM/SCHEMATIC	-
K	-	1	-	START-UP KIT	-
L	-	4	-	LADDER, FOLD DOWN	-



ISSUED CONCEPT
FOR QUOTATION

USED ON:
SEE BM:
QUANTITY REQUIRED: ONE ASSEMBLY REQUIRED

THIS DRAWING IS PROPERTY OF HOLLAND COMPANY AND IS A PROPRIETARY RIGHTS IN THE MATERIAL DISCLOSED. IT IS ISSUED IN CONFIDENCE FOR ENGINEERING INFORMATION ONLY AND MAY NOT BE COPIED OR USED FOR MANUFACTURE OF ANYTHING SHOWN WITHOUT SPECIFIC WRITTEN PERMISSION FROM HOLLAND COMPANY. HOLLAND COMPANY RESERVES THE RIGHT TO MODIFY DETAILS NOT AFFECTING STRENGTH OR APPLICATION AS MAY BE NECESSARY TO FACILITATE MANUFACTURE OR IMPROVE DESIGN.

REV.	LEVEL	DATE	CHG. NOTICE & DESCRIPT.	BY
1	1	7 FEB, 96	ONE CAR UNLOADING UNIT	L. B. FOSTER



PROPERTY OF
Holland
Company
SD-F-C0652